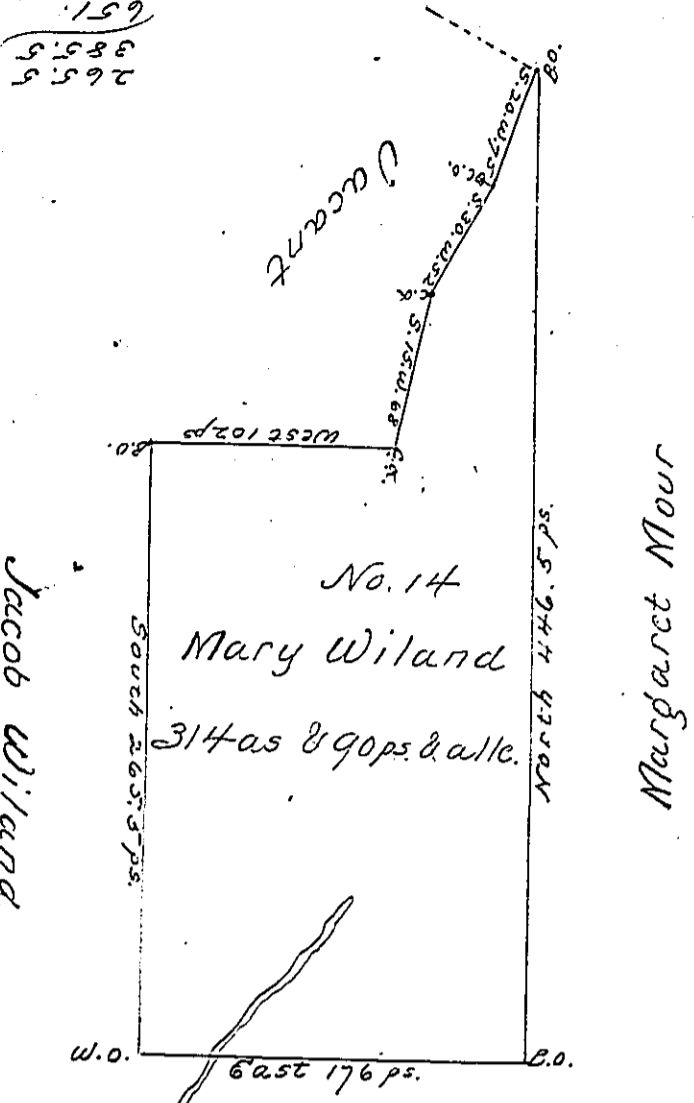


651.
385.5
265.5



Christianey Whitstone

Situated on the waters of Cove Creek in Colerain Township Bedford County containing 314 acres & 90 perches with the usual allowance of six per cent for roads &c. Surveyed for Mary Wiland the 18th day of Sept. 1794 on Warrant dated the 8th day of May 1794

George Woods Junr. S.G.

To Daniel Brodhead Esqr. S.G.

IN TESTIMONY that the above is a copy of the original remaining on file in the Department of Internal Affairs of Pennsylvania, made conformably to an Act of Assembly approved the 16th day of February, 1833, I have hereunto set my Hand and caused the Seal of said Department to be affixed at Harrisburg, this third day of February 1903

James W. Fatta
Secretary of Internal Affairs.